

# DRAINAGE KITS & ACCESSORIES

Click [here](#) to view in your browser

## 9" DRAINAGE BASIN KIT

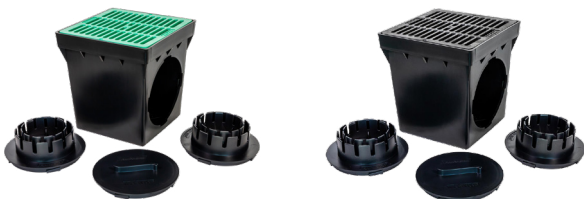


DB9KITG

DB9KITB

9" SQUARE BASIN WITH 2 OUTLETS  
TWO 3" & 4" ADAPTERS  
9" SQUARE FLAT GRATE & BASIN PLUG

## 12" DRAINAGE BASIN KIT



DB12KITG

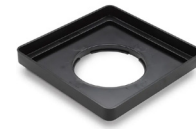
DB12KITB

12" SQUARE BASIN WITH 2 OUTLETS  
TWO 3" AND 4" ADAPTERS  
12" SQUARE FLAT GRATE & BASIN PLUG

## SQUARE BASIN & RISERS



DBRE9

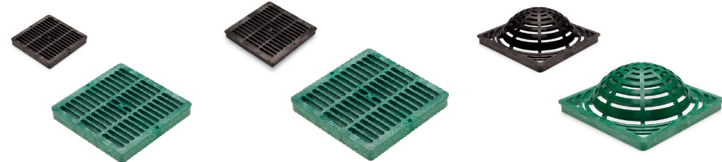


DB12SLP



DBRE12

## SQUARE FLAT & ATRIUM GRATES



DG9SF

DG12SF

DG12SA

## ROUND CATCH BASINS & GRATES



DB6R1

DG6RF

DG6RA

DB6R2

Note: 18" Catch Basin and flat grates in green or black are available if required

### Industrial Sales Company, Inc

Kansas: 1150 W. Marley Rd. Olathe, KS 66061 • Telephone: 913-829-3500 or 800-662-6750  
Nebraska: 14503 Prairie Corners Rd. Omaha, NE 68138 • Telephone: 402-896-5700 or 800-366-6880  
productordersks@industrialsales.us • www.industrialsales.us • productordersne@industrialsales.us

Contact Sales/Service or your Sales Representative for additional details as needed.